



SKAGWAY

CAPITAL
Juneau



LANGUAGE
English



CURRENCY
US dollar (USD)

LOCATION
Skagway Cruise Terminal



HOW TO GET TO DOWNTOWN
From the port, it's a 10-minute walk or short shuttle ride to historic Broadway.

WELCOME TO SKAGWAY

Rich in gold rush history, the small town of Skagway welcomes more than a million visitors in the summer months. Start off your trip at one of its famous watering holes, the Red Onion Saloon, once Alaska's most exclusive brothel. Today, the place embraces the spirit of '98 with costumes and an upstairs museum. Across the street, the former White Pass & Yukon Railroad Depot is the current HQ for the visitors center, with a gold rush museum next door. For a fun downtown tour, board the yellow 1920s-style streetcar, or take a flight-seeing tour by helicopter, catamaran, canoe or kayak. Nature-lovers, don't miss the Chilkat Bald Eagle Preserve, about 20 miles away.



© HFGM. All Rights Reserved 04/07/24

NAHLA

SIRI

NAHLA TANZANITE
BEZEL SET STUDS OR PENDANT

\$450

Exclusively available at Effy Jewelry

1. MONARCH JEWELS

Alaska's Largest Independent Jewelry Retailer

Largest selection of natural Gold Nuggets, Gold Quartz Specimens, and Jewelry. Orocal, FOPE, Kabana, Mark Henry, Korite, Tissot and John Hardy.

2. ALASKA CHRISTMAS STORE

Alaska Santas, Ornaments, Nativities & Dolls

Made in Alaska, exclusive Christmas specialties such as Santas, ornaments and nativities. Local Precious Moments Alaska doll collection. Friendly customer service, locally owned for 36 years.

3. RED ONION SALOON

Where the Ladies Never Miss a Trick

World famous good-time gold rush bar, restaurant and brothel museum. Ghost & Goodtime Girls tour is a don't-miss on Skagway lists, you'll feel like you stepped back in time! See the Shore Excursions team for details.

4. KIRMSE'S CURIOS

Life Is Too Short for Ordinary

Experience something special at this family-owned antique store since 2001. In-house custom-designed gold nugget and jade jewelry. Local Alaska favorites: ulu knives, fused glass, historical totems and Christmas ornaments.

PORT EXPERIENCES

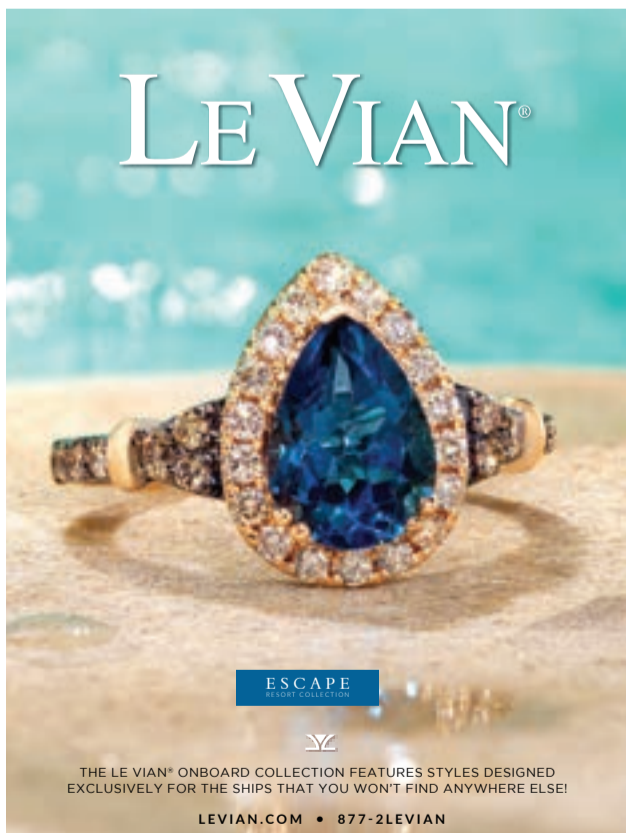
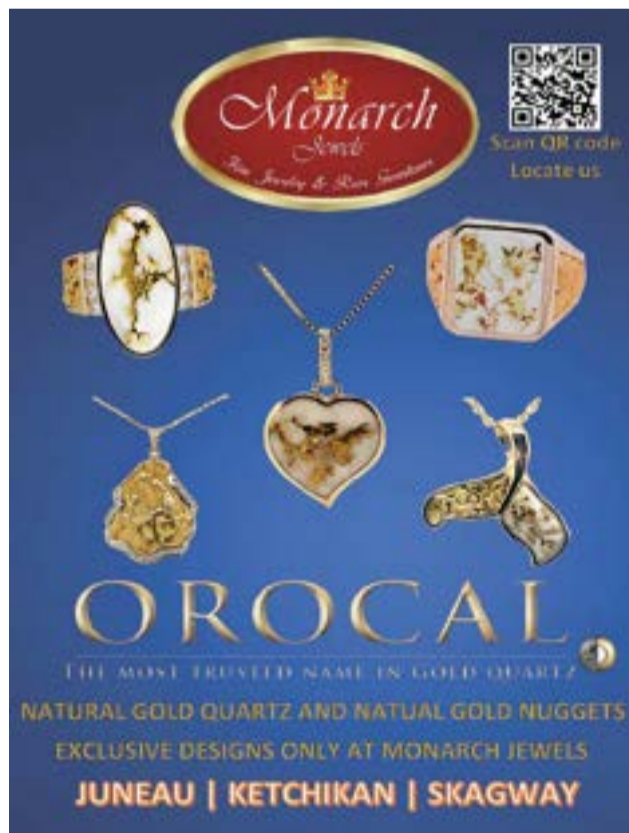
A WHITE PASS SCENIC RAILWAY



Take the unforgettable journey aboard the "Scenic Railway of the World" to the summit of White Pass, a 2,865 foot elevation.

B MUSHER'S CAMP, SLED DOGS

Discover the thrill of riding a sled pulled by a team of Alaskan Huskies, cuddle up with the adorable puppies and learn about Alaska's state sport.



SHOPPING ASHORE GUARANTEE

Shop with confidence. All merchants on this map have been carefully selected; each offers a 60-day guarantee to cruise line guests. This guarantee ensures buyers that all recommended merchants will repair or replace any unsatisfactory item, excluding buyer's negligence, buyer's remorse, watches, and lost or stolen merchandise. Some watches and other branded merchandise will be repaired or replaced by the brand's service centers. Many stores in port offer their own guarantees; please see sales associate for additional information. For purposes of determining quality and value of jewelry related to a buyer's complaint, only appraisals secured by a buyer from gem laboratories or independent graduate gemologists not affiliated with jewelry retailing will be acceptable. Watches and other branded merchandise valuation comparisons must be based on retail prices offered by authorized brand retailers. All returns must be authorized by the merchant. Please ask about individual store return policies before purchase. The Port & Shopping Program is offered and operated solely by HFGM corp., which stands behind all customer relations claims relating to the guarantee. Participating merchants have paid an advertising fee to hfgm for inclusion in this program. If you become aware of a problem during your cruise, please contact the Port & Shopping Guide on your ship for immediate assistance. If a problem arises after your cruise but within 30 days of the purchase date, you may initiate your claim by contacting the customer relations department at HFGM. HFGM corp., is not owned by and is not an affiliate / subsidiary of Norwegian Cruise Line. For customer service, contact customer.service@hfgmedia.com / 7 w 45th street, New York, NY 10036



EMERGENCY CONTACTS

CLAA ALASKA - Skagway, PO Box 729, #1 Ore Dock Road, Skagway, Alaska, 99840, United States of America
Butler Stepehns / skagway@claaalaska.com / 907 983 2815 / 907 983 2815